

# **JET**

**JWBS-9X 9" Wood Band Saw**

**10000860M ~230V 50Hz**

## **PARTS LIST**

**Walter Meier (TOOL) AG**

Tämperlistrasse 5

CH-8117 Fällanden

Switzerland

Phone +41 44 806 47 48

Fax +41 44 806 47 58

[jetinfo.eu@waltermeier.com](mailto:jetinfo.eu@waltermeier.com)

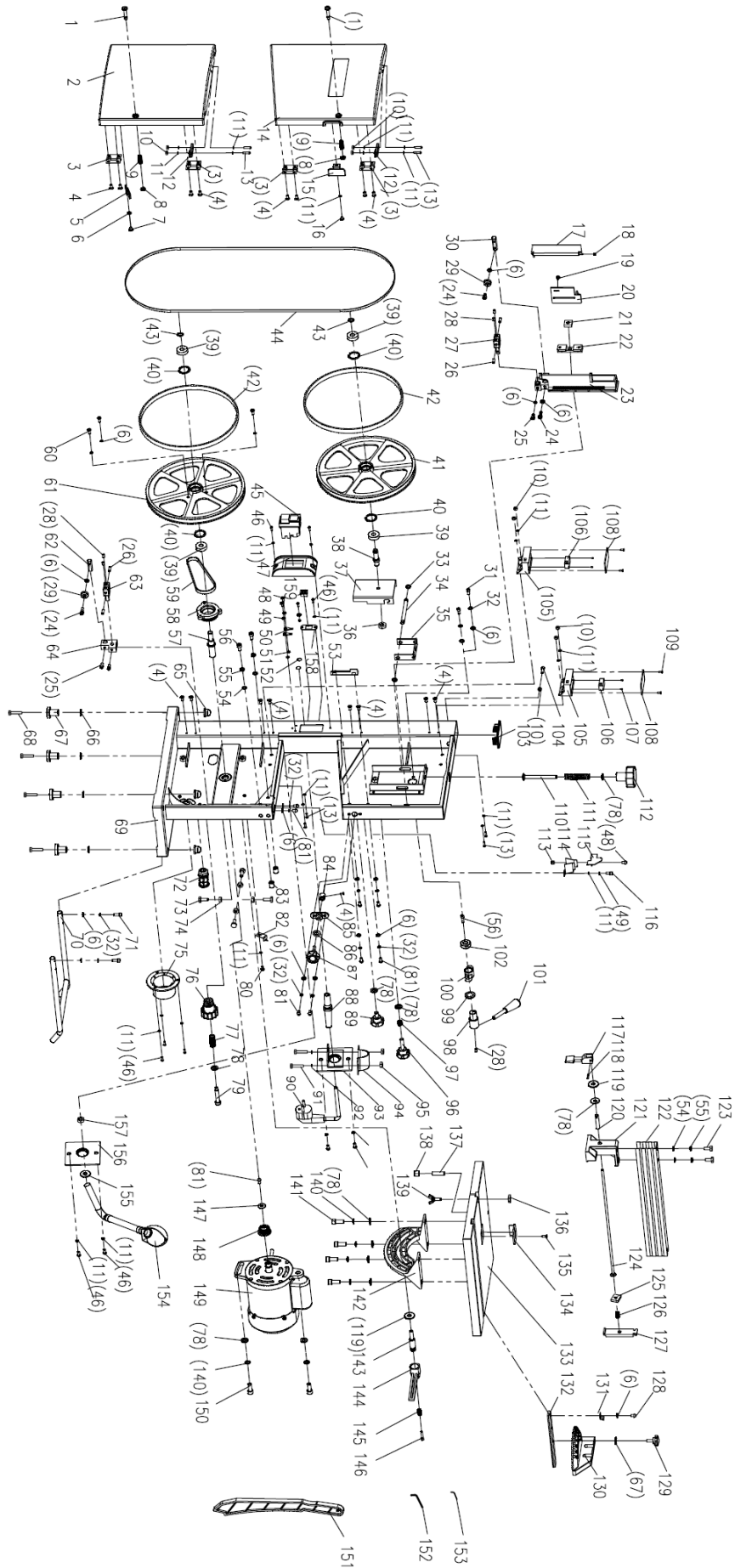
[www.jettools.com](http://www.jettools.com)



P-10000860M

2013-03

# Parts Breakdown For JWBS-9X 9" Wood Band Saw



## Parts List For JWBS-9X 9" Wood Band Saw

Index No.	Part No.	Description	Size	Qty.
1	JWBS9X-001	Bolt		2
2	JWBS9X-002	Lower Door		1
3	JWBS9X-003	Door Hinge		4
4	JWBS9X-004	Screw	M4x6	17
5	JWBS9X-005	Brush		1
6	JWBS9X-006	Washer	5	21
7	JWBS9X-007	Screw	ST3.9x13	1
8	JWBS9X-008	Door Holder		1
9	JWBS9X-009	Door Lock Spring		1
10	JWBS9X-010	Nut	M4	8
11	JWBS9X-011	Washer	4	30
12	JWBS9X-012	Pressing Paw		2
13	JWBS9X-013	Screw	M4x15	8
14	JWBS9X-014	Upper Door		1
15	JWBS9X-015	Tracking Window		1
16	JWBS9X-016	Screw	ST4.2x6	1
17	JWBS9X-017	Shield		1
18	JWBS9X-018	Spring		1
19	JWBS9X-019	Screw	ST2.9x8	1
20	JWBS9X-020	Sliding Block-B		1
21	JWBS9X-021	Sliding Block-C		1
22	JWBS9X-022	Sliding Block-A		1
23	JWBS9X-023	Up-down part		1
24	JWBS9X-024	Cap Screw	M5x16	2
25	JWBS9X-025	Cap Screw	M5x12	3
26	JWBS9X-026	Pin		4
27	JWBS9X-027	Bracket A		1
28	JWBS9X-028	Cap Screw	M6x8	5
29	JWBS9X-029	Bearing	606	2
30	JWBS9X-030	Pin Stop B		2
31	JWBS9X-031	Cap Screw	M5x10	2
32	JWBS9X-032	Spring Washer	5	12
33	JWBS9X-033	Split Washer	8	2
34	JWBS9X-034	Fixed Pin		1
35	JWBS9X-035	Fixed Block		1
36	JWBS9X-036	Nut	M10	1
37	JWBS9X-037	Moving Block		1
38	JWBS9X-038	Shaft for Driven Wheel		1
39	JWBS9X-039	Bearing	6002	4
40	JWBS9X-040	C-Ring	26	4
41	JWBS9X-041	Driven Wheel		1
42	JWBS9X-042	Cog Wheel		2
43	JWBS9X-043	C-Ring	10	2
44	JWBS9X-044	Blade		1
45	JWBS9X-045	Switch		1
46	JWBS9X-046	Screw	M4x10	11
47	JWBS9X-047	Switch Box		1
48	JWBS9X-048	Screw	M4x8	3
49	JWBS9X-049	Spring Washer	4	3
50	JWBS9X-050	Grounding Terminal		2
51	JWBS9X-051	Tooth Washer	4	2
52	JWBS9X-052	Grounding Signal		2
53	JWBS9X-053	Locking Plate		1
54	JWBS9X-054	Washer	6	4
55	JWBS9X-055	Spring Washer	6	4
56	JWBS9X-056	Cap Screw	M6x12	3

Index No.	Part No.	Description	Size	Qty.
57	JWBS9X-057	Shaft for Driving Wheel		1
58	JWBS9X-058	Synchronize Wheel		1
59	JWBS9X-059	Synchronize Belt		1
60	JWBS9X-060	Screw	ST4.9x10	3
61	JWBS9X-061	Driving Wheel		1
62	JWBS9X-062	Fixed Pin A		1
63	JWBS9X-063	Bracket B		1
64	JWBS9X-064	Lower Fixed Block		1
65	JWBS9X-065	Cap Nut	M6	4
66	JWBS9X-066	Washer	6	4
67	JWBS9X-067	Footing		4
68	JWBS9X-068	Hex. Bolt	M6x30	4
69	JWBS9X-069	Body		1
70	JWBS9X-070	Supporting		1
71	JWBS9X-071	Hex. Bolt	M5x20	2
72	JWBS9X-072	Clip		1
73	JWBS9X-073	Hex. Bolt	M6x16	4
74	JWBS9X-074	Nut	M6	4
75	JWBS9X-075	Dust Outlet		1
76	JWBS9X-076	Angle Adjust Gear		1
77	JWBS9X-077	Spring		1
78	JWBS9X-078	Washer	8	11
79	JWBS9X-079	Bolt		1
80	JWBS9X-080	Screw	M4x6	1
81	JWBS9X-081	Screw	M5x10	9
82	JWBS9X-082	Indicator		1
83	JWBS9X-083	Loacting Sleeve		2
84	JWBS9X-084	Adjusting Gear		1
85	JWBS9X-085	Loacting Sleeve A		1
86	JWBS9X-086	Wave shape Washer	8	2
87	JWBS9X-087	Up-down Knob		1
88	JWBS9X-088	Protecting Brush		1
89	JWBS9X-089	Locking knob		1
90	JWBS9X-090	Power Cord		1
91	JWBS9X-091	Screw	M3X11	2
92	JWBS9X-092	Washer	3	2
93	JWBS9X-093	Fixed Plate Assembly		1
94	JWBS9X-094	Cord Clip		1
95	JWBS9X-095	Nut	M3	2
96	JWBS9X-096	Fine Adjusting Knob		1
97	JWBS9X-097	Spring		1
98	JWBS9X-098	Eccentricity Shaft		1
99	JWBS9X-099	Wave shape Washer		1
100	JWBS9X-100	Loacting Sleeve B		1
101	JWBS9X-101	Compression Handle		1
102	JWBS9X-102	Roller		1
103	JWBS9X-103	Block		1
104	JWBS9X-104	Cap Screw	M4x12	1
105	JWBS9X-105	Box		2
106	JWBS9X-106	Micro Switch		2
107	JWBS9X-107	Screw	ST2.9x13	4
108	JWBS9X-108	Cover		2
109	JWBS9X-109	Screw	ST3.2x6	4
110	JWBS9X-110	Bolt	M8x80	1

Index No.	Part No.	Description	Size	Qty.
111	JWBS9X-111	Compression Spring		1
112	JWBS9X-112	Swelling knob		1
113	JWBS9X-113	Locking Nut	M4	1
114	JWBS9X-114	Lower Shield A		1
115	JWBS9X-115	Lower Shield B		1
116	JWBS9X-116	Cap Screw	M4x6	1
117	JWBS9X-117	Clamp handle		1
118	JWBS9X-118	Handle Upper Cover		1
119	JWBS9X-119	Pin	3	1
120	JWBS9X-120	Connecting Screw Rod		1
121	JWBS9X-121	Fixed Pressing Paw		1
122	JWBS9X-122	Guide Tube		1
123	JWBS9X-123	Hex. Bolt	M6x15	2
124	JWBS9X-124	Connecting Rod		1
125	JWBS9X-125	Square Washer A		1
126	JWBS9X-126	Spring		1
127	JWBS9X-127	Movable Clamp Paw		1
128	JWBS9X-128	Screw	M5x8	1
129	JWBS9X-129	Knob for Mitre Angle		1
130	JWBS9X-130	Mitre Angle		1
131	JWBS9X-131	Pointer		1
132	JWBS9X-132	Fence		1
133	JWBS9X-133	Worktable		1
134	JWBS9X-134	Table Inset		1
135	JWBS9X-135	Set Screw	M3x8	1
136	JWBS9X-136	Snap Gauge		1
137	JWBS9X-137	Cap Screw	M8x30	1
138	JWBS9X-138	Cushion cap		1
139	JWBS9X-139	Wing Bolt	M6x15	1
140	JWBS9X-140	Spring Washer	8	6
141	JWBS9X-141	Cap Screw	M8x16	4
142	JWBS9X-142	Mitre Seat		1
143	JWBS9X-143	Lock Bolt	M6x15	2
144	JWBS9X-144	Table Tilt Locking Knob		1
145	JWBS9X-145	Compressing Spring		1
146	JWBS9X-146	Cap Screw	M4x20	2
147	JWBS9X-147	Big Washer	5	1
148	JWBS9X-148	Synchronize Wheel A		1
149	JWBS9X-149	Motor		1
150	JWBS9X-150	Cap Screw	M8x20	2
151	JWBS9X-151	Push Stick		1
152	JWBS9X-152	Spanner	4	1
153	JWBS9X-153	Spanner	3	1
154	JWBS9X-154	lamp		1
155	JWBS9X-155	Washer	10	1
156	JWBS9X-156	Fixed Plate		1
157	JWBS9X-157	Nut	M10x1	1
158	JWBS9X-158	Plate for Lamp Switch		1
159	JWBS9X-159	Lamp Switch	HY17	1

# Wiring Diagram for JWBS-9X 9" Wood Band Saw

10000860M..... ~ 230V, 50Hz

